

# FAB Equipment Catalog

**SEPTEMBER 2022**

## C15 SERVO ELECTRIC PRESS BRAKE

IN STOCK

- 5' x 48 ton
- 15" colour touch screen control
- Back gauge: X, R, Z1, Z2
- Laser safe safety lights

**\$124,495**

LEARN MORE



## EMPRO B-SERIES 10' x 150 TON HYDRAULIC PRESS BRAKE

ARRIVING IN OCTOBER

- Model: B135-3100
- Delem DA58T control
- CNC X&R backgauge
- Manual crowning
- Fessler safety lights
- Upper and lower tooling

**\$105,995**

LEARN MORE



## EMPRO C-SERIES 12' x 242 TON HYDRAULIC PRESS BRAKE

- Model: C220-3700
- Delem DA66T control
- 4 axis back gauge – X,R, Z1,Z2
- CNC crowning
- Fessler safety lights
- Upper and lower tooling
- Electrics: 575V 3PH 60Hz

**\$162,995**

LEARN MORE





## MACHITECH DIAMOND CUT™ CNC PLASMA CUTTING TABLE

- Table size range: 5' x 10' to 12' x 45'
- Hypertherm Edge Connect CNC control
- Hypertherm full suite - true hole capable

If you looking to add more versatility and capabilities consider the range of available options that can be added to your Diamond Cut.

### Options include:

- 5-axis bevel cutting
- Drill head
- Drill tool changer
- Nexen rack - greater traverse speed for more parts and less maintenance
- Rotary pipe/tube cutting
- Scriber

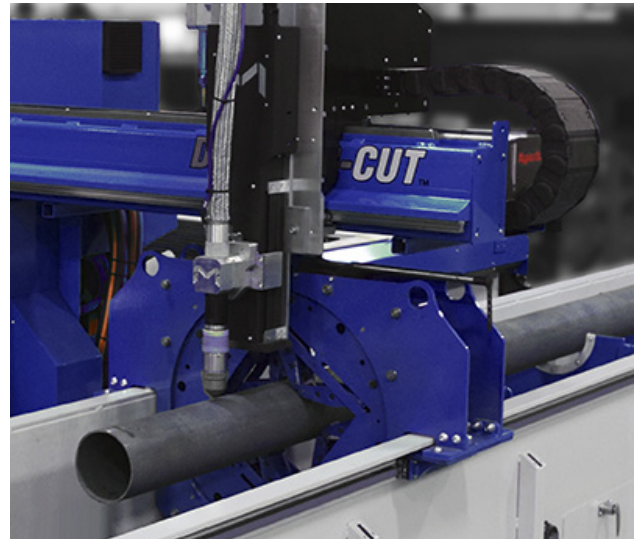
**Starting at \$174,995**

or \$3,367/month

**LEARN MORE**



**DIAMOND CUT**



**NEED HELP WITH YOUR DECISION?  
CHECK OUT THIS VIDEO!**



## JOUANEL 10ft 16ga ELECTRO MECHANICAL SHEAR

IN STOCK

- Model: CGI3080-BAE
- Cutting length: 10ft
- Capacity: 14ga aluminum, 16ga mild steel
- Speed: 25 strokes/minute
- Sheet support system
- Front material return with mobile cart
- Adjustable backgauge fingers
- CNC touch screen control
- Motorized backgauge
- Electrics: 220V 3PH 60Hz

**\$49,995**

LEARN MORE



WATCH  
YOUTUBE  
VIDEO



MADE IN  
FRANCE



## JOUANEL 10ft 12ga CNC FOLDER

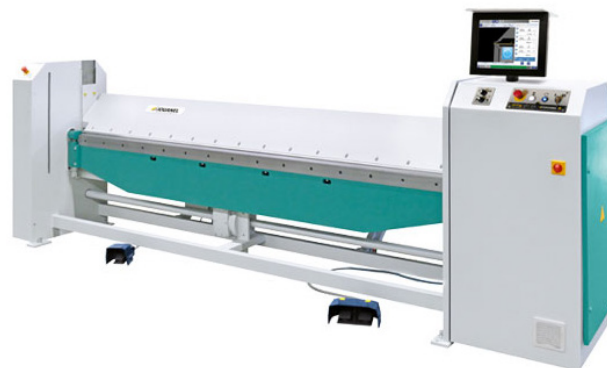
- Model: PTS3100-30
- Capacity: 122' x 12ga
- AMS pathfinder touchscreen control
- 59" backgauge pneumatic control offset of back gauge fingers for tapered parts
- Optional 120mm segmented tooling

**\$137,595**

LEARN MORE



MADE IN  
FRANCE



## JOUANEL 10ft 16ga CNC FOLDER

IN STOCK

- Model: PTS3100
- Capacity: 122' x 12ga
- AMS pathfinder 19" touchscreen control (US made)
- Manual crowning adjustment of lower folding beam
- 20 degree upper folding tool
- Back gauge travel: 39.5"
- Dual foot pedal (single or double operation)
- Fingers for big and small end
- Safety light curtain included

**\$107,995**

LEARN MORE



WATCH  
YOUTUBE  
VIDEO



MADE IN  
FRANCE



## APEX 1000 SERIES 25" WIDE DEBURRING MACHINE

**Apex Model 1025M-DC- 25" Wide Deburring/Grinding/Finishing Machine**

- Slag / Dross / Mill Scale removal
- 25" x 60" belt
- 15 HP motor
- Motorized height control with pre-set values
- Sticky conveyor belt for processing small parts
- Optional wet dust collector available

**\$31,995**

**LEARN MORE**

**Apex Model 1025M-DBC- 25" Wide (2) Head Belt and ScotchBrite Deburring & Finishing Machine**

- 2 sanding stations – 25" x 60 belt and ScotchBrite barrel brush
- 15 and 10 HP motors
- Motorized thickness adjustment with pre-sets
- Sticky conveyor belt to allow for small parts to be processed
- Optional 10 HP wet dust collector available

**\$59,395**

**LEARN MORE**



## APEX 37" EZ SANDER

**IN STOCK**

- Belt Size: 37" x 60
- Electronic Belt tracking
- 5-25 FPM feed rate
- 0-5" conveyor bed opening
- Single 6" diameter cam adjustable contract drum
- Available in 1 PH or 3 PH electrics
- Includes: Starter belt kit, dust collector and EZ wet dust collector

**\$30,995**

**LEARN MORE**



WATCH  
YOUTUBE  
VIDEO





## BEAMCUT

**A robotic plasma cutting system unlike any other.**

- Can cut H/I/T/C-channel/HSS/angle and more
- Fanuc robotics for 4-sided cutting
- Laser profiler for rapid visual positioning
- In-feed and out-feed conveyors
- Beamcut robotic software
- Safety cabinet with doors for easy access
- Hypertherm XPR300 and MaxPro200 Plasma
- Beam length: 4' minimum, 65' (bevel 50°) maximum

**LEARN MORE**



WATCH  
YOUTUBE  
VIDEO



**BEAMCUT**™  
SYSTEMS

## MACHITECH PIPE CUT SYSTEM

Is the only fully automated pipe cutting system on the market.

It features a floating chuck system with automatic height clamping-self adjusting pneumatic support rollers and a patented inverted rail system.

Square tube and HSS cutting systems also available.

**LEARN MORE**



WATCH  
YOUTUBE  
VIDEO



**Machitech**®  
AUTOMATION

## NORLOK SURELOK III CLINCHING MACHINE

### No more spot welding!

- Model: Surelok-III
- 25" throat
- Fasten up to 2 layers of 14ga mild steel  
(2 layers of 18ga stainless steel with simple tooling change)
- Adjustable 2-1/2" stroke for greater access
- Advanced power unit

**\$25,090**

**LEARN MORE**



WATCH  
YOUTUBE  
VIDEO



## EMPRO 10ft 1/4" HYDRAULIC SHEAR

- Model: V06-3100
- Capacity: 10ft 1/4"
- Cybelelec touch 8 control
- 39" automatic swing-up ballscrew backgauge
- Pneumatic sheet support system
- Variable rake angle
- Variable blade gap
- Larger capacity models available

**\$68,495**

**LEARN MORE**



## EMPRO INITIAL PINCH PLATE BENDING ROLLERS

- Roll length: 61"
- Hydraulic powered backroll adjustment
- All 3 rolls powered
- Forward/reverse foot pedal control
- Digital readout on back roll
- R-0520H, R-0535H, R-0570H models

Model	Description	Price
R0520H	5'x14ga, Hydraulic Plate Roller	\$17,995
R0535H	5'x10ga, Hydraulic Plate Roller	\$22,995
R0570H	5'x1/4", Hydraulic Plate Roller	\$35,495

**LEARN MORE**



## 3015 PRO SERIES WITH 4 KW RESONATOR

- Table size: 10'x5' to 8'x40'
- 2-15Kw IPG photonics laser source
- Automatic dual shuttle table
- Helical rack and pinion or optional linear drive
- Precitec cutting head

**Starting at \$11,508/month**

[LEARN MORE](#)



## 3015 SL SERIES WITH 4 KW RESONATOR

- Table size: 10'x5'
- 2-6Kw IPG photonics laser source
- Automatic dual shuttle table
- Helical rack and pinion
- Precitec cutting head

**Starting at \$11,156/month**

[LEARN MORE](#)

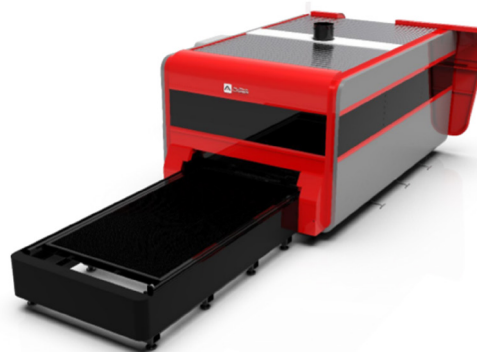


## 3015 PRIME SERIES WITH 4 KW RESONATOR

- Table size: 10'x5' to 8'x40'
- 2-15Kw IPG photonics laser source
- Automatic dual shuttle table
- Helical rack and pinion or optional linear drive
- Precitec cutting head

**Starting at \$7,127/month**

[LEARN MORE](#)

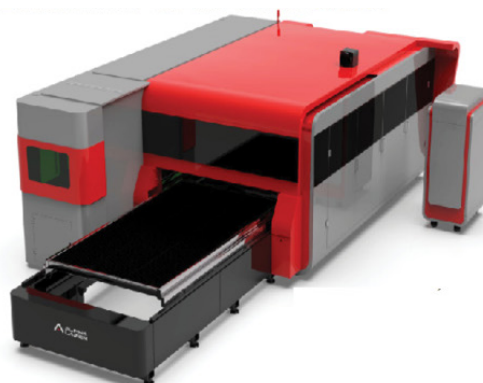


## 3015 PRIME COMBO WITH 4 KW RESONATOR AND 20' TUBE CUTTING WITH 220 MM CHUCKS

- Table size: 10'x5' to 8'x40'
- Tube cutting attachment: 20' or 26'
- Tube diameter range: 3/4"-5/8" (optional 13" 3/4")
- 2-15Kw IPG photonics laser source

**Starting at \$9,682/month**

[LEARN MORE](#)





## MARVEL HYDRAULIC IRONWORKER

- Single and dual cylinder machines
- 60 - 192 ton capacity
- 5 work stations
- Heavy duty construction
- Completely integrated
- Simultaneous dual operation
- Comes standard with 5 sets of punches and dies

**Starting from \$22,895**

**LEARN MORE**



WATCH  
YOUTUBE  
VIDEO



## EMPRO 55 TON HYDRAULIC IRONWORKER

- Throat depth: 8"
- Flat bar shear cutting
- Length: 15-1/2" blade (5/8" x 15")
- Angle shear: 5" x 5" x 3/8"
- Coper notcher: 2-3/4"x4"x1/4"
- Round and square bar shear
- Round (min. to max.): 1/4" - 1-1/2"
- Square (min. to max.): 1/2"-1"
- Electrics: 220V 3PH 60Hz

**\$17,995**

or \$354/month

**LEARN MORE**



## EMPRO VARIABLE SPEED DRILL PRESS

- Model: Z5032-V
- Maximum drilling capacity: 1.57"
- Spindle speed: 55-350 low/350-2300 high
- Motor: 1.5HP/1.1 Kw
- Voltage: 230/3/60 - 3 amps
- Includes: Drill chuck and arbor, 6" drill press vise and clamping kit, integrated coolant system, DRO for spindle speed, work light

**\$5,995**

**LEARN MORE**



## EMPRO GEAR HEAD DRILLING MACHINE

- Model: Z5030
- Maximum drilling capacity: 1.5"
- Maximum tapping capacity: M20
- 6 speed - 90 to 1970 rpm (220V 1PH)
- 12 speed - 115 to 3150 rpm (220V 3PH)
- Diameter of column: 4.5"
- Table size: 20" x 18"

**\$4,495**

**LEARN MORE**



WATCH  
YOUTUBE  
VIDEO

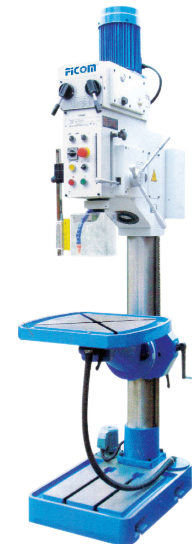


## EMPRO HEAVY DUTY DRILLING MACHINE

- Model: DM5040
- Maximum drilling capacity: 1.5"
- Threading in steel & cast Iron: M20 & M24
- Taper of spindle bore: MT4
- Spindle travel: 7"
- 2 speed - 50 to 1450 rpm
- 2 steps spindle power feed: 0.004" - 0.008" / rev

**\$5,495**

**LEARN MORE**



## ELLIS 1600 & 1800 BANDSAW

- Built-in protractor for fast and accurate selection of angles
- Stock remains in one position for all cuts
- Head moves left or right for angle cutting
- Quick conversion from horizontal to vertical saw
- 1 H.P. - 110V-motor and 1" band saw blade

### ELLIS 1600 CUT CAPACITY

- 10" round @ 90 degrees
- 2. 6 7/8" @ 45 degrees

**\$5,495**

[LEARN MORE](#)

### ELLIS 1800 CUT CAPACITY

- 11" round @ 90 degrees
- 2. 14" flat @ 90 degrees
- 3. 11" x 10" rectangular tube @ 90 degrees

**\$6,995**

[LEARN MORE](#)



## EM-PRO HY-4 10ga HYDRAULIC NOTCHER

- Model: HY-4
- Capacity: 10ga mild steel
- 8.5" x 8.5" x 90 degree
- Side slug chute
- 220V 1PH 60Hz
- Includes plexiglass safety shield

**\$12,495**

[LEARN MORE](#)



## MARVEL MARK 8 II & III VERTICAL TILT FRAME BANDSAW

- Capacity: 18" x 22"
- Blade speed: 5 - 450 FPM

### MARK 8 II

- Head tilt: 0-45° left and right

**\$53,825**

**LEARN MORE**



WATCH  
YOUTUBE  
VIDEO

### MARK 8 III

- Head tilt: 0-60° left and right
- Includes 2nd standard Vise, quick action vise, flood coolant, power column tilt, power chip brush, digital tilt readout, mist lubrication

**\$77,235**

**LEARN MORE**



WATCH  
YOUTUBE  
VIDEO



## MARVEL 380-APC VERTICAL TILT FRAME BANDSAW

- 15" x 20" capacity at 90°
- Miter capability +/- 60°
- Automatic indexing shuttle feed
- Programmable control
- Several options available to increase productivity available

**STARTING AT \$152,995**

**LEARN MORE**



WATCH  
YOUTUBE  
VIDEO



## MARVEL SWIVEL HEAD HORIZONTAL BANDSAW

- Model: S330/2/HV
- Capacity @ 90: 13" round, 12" x 18" rectangle
- Blade speed: 0-330 SFPM
- Includes powered blade brush, flood coolant system, hydraulic vise, power head lift
- Miter +45°/-60°

**\$38,500**

**LEARN MORE**



WATCH  
YOUTUBE  
VIDEO





390 Eagle Drive  
Winnipeg, MB  
R3C 2E6 Canada

[sales@empire-machinery.com](mailto:sales@empire-machinery.com)  
1.800.665.8089  
[empire-machinery.com](http://empire-machinery.com)

Prices are subject to change without notice.  
All prices are in Canadian dollars unless  
otherwise stated.