

FAB Equipment Catalog

MARCH 2023

mitsubishi BB Series Electric Press Brakes

- Model: BB 4013
- 50" x 36 ton
- 5 axis back gauge

Starting at \$148,000 USD

[LEARN MORE](#)



MITSUBISHI BH Series Hybrid Press Brakes

- Model BH1353 - Hybrid 10' x 148 Ton
- 22" 2D/3D Touch Screen Control
- Patented Ball Screw Servo Hybrid Drive System
- Automatic Material Thickness detection & compensation

Starting at \$234,000 USD

[LEARN MORE](#)



EMPRO B-SERIES 10' x 150 TON HYDRAULIC PRESS BRAKE

IN STOCK

- Model: B135-3100
- Delem DA58T control
- CNC X&R backgauge
- Manual crowning
- Fessler safety lights
- Upper and lower tooling

\$105,995

\$119,500 - with CNC Crowning

[LEARN MORE](#)



EMPRO C-SERIES 12' x 242 TON HYDRAULIC PRESS BRAKE

- Model: C220-3700
- New Delem DA69S control - 24" touch screen
- 5 Axis back gauge - X, R, Z1, Z2, Delta X
- CNC crowning
- New Fessler Akas 5 safety lights
- Upper and lower European tooling

\$189,995

[LEARN MORE](#)





MACHITECH DIAMOND CUT™ CNC PLASMA CUTTING TABLE

- Table size range: 5' x 10' to 12' x 45'
- Hypertherm Edge Connect CNC control
- Hypertherm full suite - true hole capable

If you looking to add more versatility and capabilities consider the range of available options that can be added to your Diamond Cut.

Options include:

- 5-axis bevel cutting
- Drill head
- Drill tool changer
- Nexen rack - greater traverse speed for more parts and less maintenance
- Rotary pipe/tube cutting
- Scriber

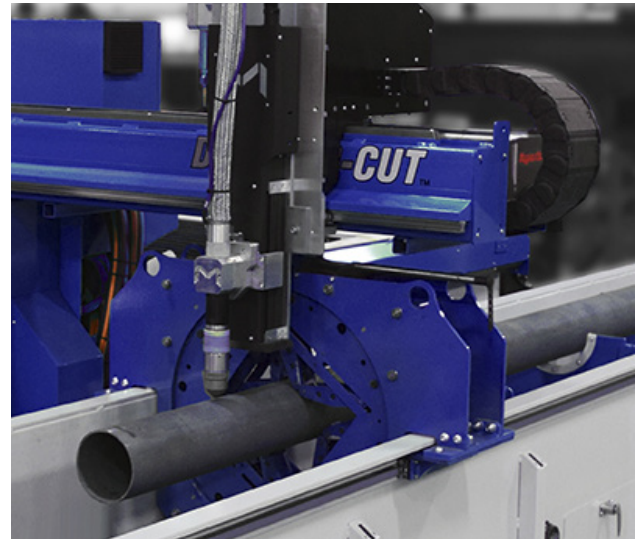
Starting at \$174,995

or \$3,367/month

[LEARN MORE](#)



DIAMOND CUT



NEED HELP WITH YOUR DECISION?
CHECK OUT THIS VIDEO!



JOUANEL 10ft 16ga ELECTRO MECHANICAL SHEAR

IN STOCK

- Model: CGI3080-BAE
- Cutting length: 10ft
- Capacity: 14ga aluminum, 16ga mild steel
- Speed: 25 strokes/minute
- Sheet support system
- Front material return with mobile cart
- Adjustable backgauge fingers
- CNC touch screen control
- Motorized backgauge
- Electrics: 220V 3PH 60Hz

\$55,995

LEARN MORE



WATCH
YOUTUBE
VIDEO



MADE IN
FRANCE



JOUANEL 10ft 12ga CNC FOLDER

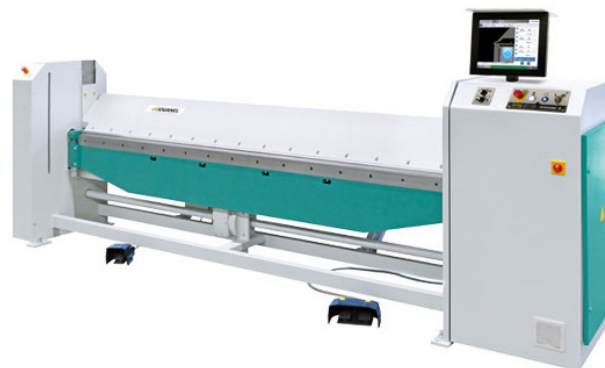
- Model: PTS3100-30
- Capacity: 122' x 12ga
- AMS pathfinder touchscreen control
- 59" backgauge pneumatic control offset of back gauge fingers for tapered parts
- Includes 120mm tall segmented upper tooling

\$174,995

LEARN MORE



MADE IN
FRANCE



JOUANEL 10ft 16ga CNC FOLDER

IN STOCK

- Model: PTS3100
- Capacity: 122' x 12ga
- AMS pathfinder 19" touchscreen control (US made)
- Manual crowning adjustment of lower folding beam
- 20 degree upper folding tool
- Back gauge travel: 39.5"
- Dual foot pedal (single or double operation)
- Fingers for big and small end
- Safety light curtain included

\$116,995

LEARN MORE



WATCH
YOUTUBE
VIDEO



MADE IN
FRANCE



APEX 2000 SERIES DEBURRING MACHINES

Heavy Duty - 3 Station - Disc/Brush/Brush 37" Wide Deburring Machine (2037M-DSSc)

- 37" x 75 Belt - 20 HP Drive
- (2) 9" Diameter Disc x 4 per station - 5 HP Drive
- Programmable part thickness
- Small Parts Processing Kit
- Optional wet dust collector available

\$3,421/month

LEARN MORE



WATCH
YOUTUBE
VIDEO

52" Wide - 4 station - Disc/Brush/Brush/ Disc - Deburring/Finishing Machine (2052M-DSSDc)

- 52" x 75" Belt - 30/25 HP (Stations 1/4)
- (2) 10" Diameter Disc x 5 per station - 5 HP Drive
- VFD on last belt station for straight grain finishing
- Programmable part thickness
- Small Parts processing Kit
- Optional wet dust collector available

\$4,831/month

LEARN MORE



WATCH
YOUTUBE
VIDEO



APEX 37" EZ SANDER IN STOCK

- Belt Size: 37" x 60
- Electronic Belt tracking
- 5-25 FPM feed rate
- 0-5" conveyor bed opening
- Single 6" diameter cam adjustable contract drum
- Available in 1 PH or 3 PH electrics
- Includes: Starter belt kit, dust collector and EZ wet dust collector

\$32,995

LEARN MORE



WATCH
YOUTUBE
VIDEO



BEAMCUT

A robotic plasma cutting system unlike any other.

- Can cut H/I/T/C-channel/HSS/angle and more
- Fanuc robotics for 4-sided cutting
- Laser profiler for rapid visual positioning
- In-feed and out-feed conveyors
- Beamcut robotic software
- Safety cabinet with doors for easy access
- Hypertherm XPR300 and MaxPro200 Plasma
- Beam length: 4' minimum, 65' (bevel 50°) maximum

LEARN MORE



WANT TO LEARN EVEN MORE

Contact us for details on the upcoming **Seminar** being held in Winnipeg on **March 29th, 2023**, by Beam-Cut.

MACHITECH PIPE CUT SYSTEM

Is the only fully automated pipe cutting system on the market.

It features a floating chuck system with automatic height clamping-self adjusting pneumatic support rollers and a patented inverted rail system.

Square tube and HSS cutting systems also available.

LEARN MORE



NORLOK SURELOK III CLINCHING MACHINE

No more spot welding!

- Model: Surelok-III
- 25" throat
- Fasten up to 2 layers of 14ga mild steel
(2 layers of 18ga stainless steel with simple tooling change)
- Adjustable 2-1/2" stroke for greater access
- Advanced power unit

\$25,090

LEARN MORE



WATCH
YOUTUBE
VIDEO



EMPRO INITIAL PINCH PLATE BENDING ROLLERS

- Roll length: 61"
- Hydraulic powered backroll adjustment
- All 3 rolls powered
- Forward/reverse foot pedal control
- Digital readout on back roll
- R-0520H, R-0535H, R-0570H models

Model	Description	Price
R0520H	5'x14ga, Hydraulic Plate Roller	\$17,995
R0535H	5'x10ga, Hydraulic Plate Roller	\$22,995
R0570H	5'x1/4", Hydraulic Plate Roller	\$39,995

LEARN MORE



3015 PRO SERIES WITH 4 KW RESONATOR

- Table size: 10'x5' to 8'x40'
- 2-15Kw IPG photonics laser source
- Automatic dual shuttle table
- Helical rack and pinion or optional linear drive
- Precitec cutting head
- **Note:** Available with optional 5 axis bevel cutting head

Starting at \$11,508/month

[LEARN MORE](#)



3015 SL SERIES WITH 4 KW RESONATOR

- Table size: 10'x5'
- 2-6Kw IPG photonics laser source
- Automatic dual shuttle table
- Helical rack and pinion
- Precitec cutting head

Starting at \$11,156/month

[LEARN MORE](#)

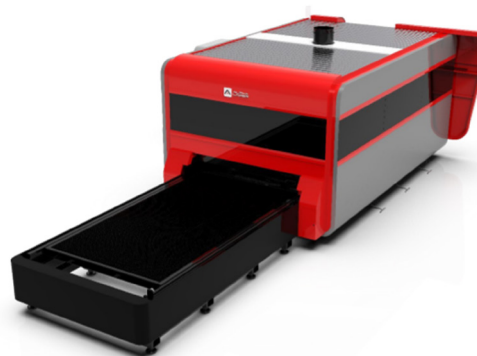


3015 PRIME SERIES WITH 4 KW RESONATOR

- Table size: 10'x5' to 8'x40'
- 2-15Kw IPG photonics laser source
- Automatic dual shuttle table
- Helical rack and pinion or optional linear drive
- Precitec cutting head

Starting at \$7,127/month

[LEARN MORE](#)

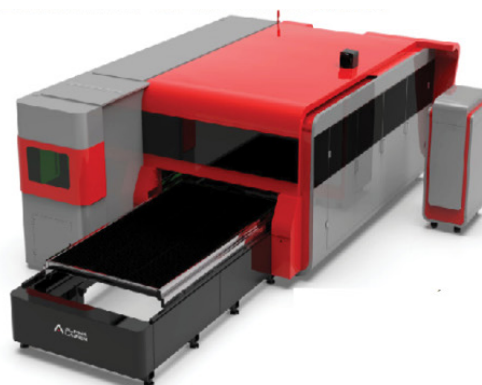


3015 PRIME COMBO WITH 4 KW RESONATOR AND 20' TUBE CUTTING WITH 220 MM CHUCKS

- Table size: 10'x5' to 8'x40'
- Tube cutting attachment: 20' or 26'
- Tube diameter range: 3/4"-5/8" (optional 13" 3/4")
- 2-15Kw IPG photonics laser source

Starting at \$9,682/month

[LEARN MORE](#)



MARVEL HYDRAULIC IRONWORKER

- Single and dual cylinder machines
- 60 - 192 ton capacity
- 5 work stations
- Heavy duty construction
- Completely integrated
- Simultaneous dual operation
- Comes standard with 5 sets of punches and dies

Starting at \$29,500

LEARN MORE



EMPRO 55 TON HYDRAULIC IRONWORKER

- Throat depth: 8"
- Flat bar shear cutting
- Length: 15-1/2" blade (5/8" x 15")
- Angle shear: 5" x 5" x 3/8"
- Coper notcher: 2-3/4"x4"x1/4"
- Round and square bar shear
- Round (min. to max.): 1/4" - 1-1/2"
- Square (min. to max.): 1/2"-1"
- Electrics: 220V 3PH 60Hz or 575V 3PH 60 Hz

\$25,995

LEARN MORE



EMPRO VARIABLE SPEED DRILL PRESS

- Model: Z5032-V
- Maximum drilling capacity: 1.57"
- Spindle speed: 55-350 low/350-2300 high
- Motor: 1.5HP/1.1 Kw
- Voltage: 230/3/60 - 3 amps
- Includes: Drill chuck and arbor, 6" drill press vise and clamping kit, integrated coolant system, DRO for spindle speed, work light

\$5,495

LEARN MORE



EMPRO GEAR HEAD DRILLING MACHINE

- Model: Z5030
- Maximum drilling capacity: 1.5"
- Maximum tapping capacity: M20
- 6 speed - 90 to 1970 rpm (220V 1PH)
- 12 speed - 115 to 3150 rpm (220V 3PH)
- Diameter of column: 4.5"
- Table size: 20" x 18"

\$4,995

LEARN MORE



WATCH
YOUTUBE
VIDEO

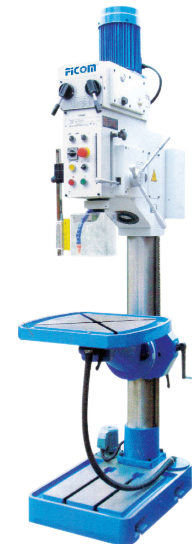


EMPRO HEAVY DUTY DRILLING MACHINE

- Model: DM5040
- Maximum drilling capacity: 1.5"
- Threading in steel & cast Iron: M20 & M24
- Taper of spindle bore: MT4
- Spindle travel: 7"
- 2 speed - 50 to 1450 rpm
- 2 steps spindle power feed: 0.004"-0.008"/rev

\$4,995 (1 in stock)

LEARN MORE



ELLIS 1600 & 1800 BANDSAW

- Built-in protractor for fast and accurate selection of angles
- Stock remains in one position for all cuts
- Head moves left or right for angle cutting
- Quick conversion from horizontal to vertical saw
- 1 H.P. - 110V-motor and 1" band saw blade

Model	Cut Capacity	Price
1600	<ul style="list-style-type: none">• 10" round @ 90 degrees• 6 7/8" @ 45 degrees	\$6,650
1800	<ul style="list-style-type: none">• 11" round @ 90 Degrees• 9" Round @ 45 Degrees• 11" H x 10" W @ 90 Degrees	\$7,650

LEARN MORE



EM-PRO HY-4 10ga HYDRAULIC NOTCHER

- Model: HY-4
- Capacity: 10ga mild steel
- 8.5" x 8.5" x 90 degree
- Side slug chute
- 220V 1PH 60Hz
- Includes plexiglass safety shield

\$11,750

LEARN MORE



MARVEL MARK 8 II & III VERTICAL TILT FRAME BANDSAW

- Capacity: 18" x 22"
- Blade speed: 5 - 450 FPM

MARVEL MARK 8 II

- Head tilt: 0-45° left and right

Starting at \$55,995

LEARN MORE



WATCH
YOUTUBE
VIDEO

MARVEL MARK 8 III

- Head tilt: 0-60° left and right
- Includes 2nd standard Vise, quick action vise, flood coolant, power column tilt, power chip brush, digital tilt readout, mist lubrication

Starting at \$82,495

LEARN MORE



WATCH
YOUTUBE
VIDEO



MARVEL 380-APC VERTICAL TILT FRAME BANDSAW

- 15" x 20" capacity at 90°
- Miter capability +/- 60°
- Automatic indexing shuttle feed
- Programmable control
- Several options available to increase productivity available

Starting at \$164,695

LEARN MORE



WATCH
YOUTUBE
VIDEO



MARVEL SWIVEL HEAD HORIZONTAL BANDSAW

- Model: S330/2/HV
- Capacity @ 90: 13" round, 12" x 18" rectangle
- Blade speed: 0-330 SFPM
- Includes powered blade brush, flood coolant system, hydraulic vise, power head lift
- Miter +45°/-60°

\$41,775

LEARN MORE



WATCH
YOUTUBE
VIDEO





390 Eagle Drive
Winnipeg, MB
R3C 2E6 Canada

sales@empire-machinery.com
1.800.665.8089
empire-machinery.com

Prices are subject to change without notice.
All prices are in Canadian dollars unless
otherwise stated.